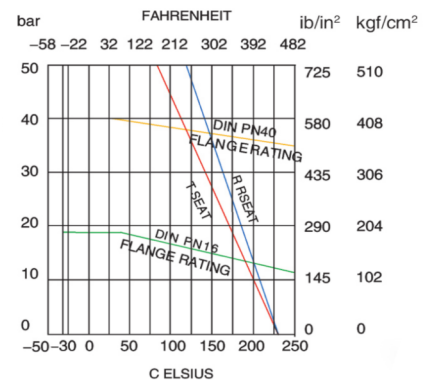
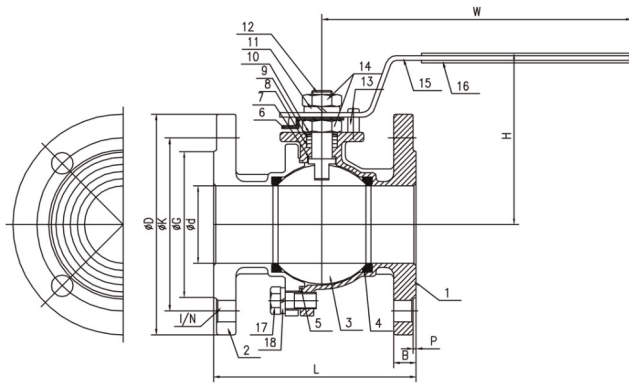
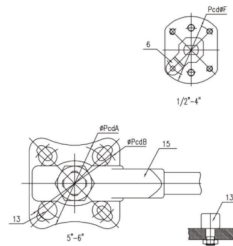


# 2 piece full port ball valve flange end

ITEM	PARTS	Q'TY	MATERIAL T2F PN16	MATERIAL T2F PN16 -C
1	BODY	1	ASTM-A351-CF8M	ASTM-A216-WCB
2	CAP	1	ASTM-A351-CF8M	ASTM-A216-WCB
3	BALL	1	ASTM-A351-CF8M	ASTM-A351-CF8M
4	BALL SEAT	2	PTFE	PTFE
5	JOINT GASKET	1	PTFE	PTFE
6	STOPPER	1	AISI304	AISI304
7	THRUST WASHER	1	PTFE	PTFE
8	STEM PACKING	1	PTFE	PTFE
9	HIGH WASHER	1	AISI304	AISI304
10	BVWASHER	2	AISI301	AISI301
11	SPRING WASHER	1	AISI304	AISI304
12	STEM	1	AISI316	AISI316
13	STOP PIN	1	AISI304	AISI304
14	STEM NUT	2	AISI304	AISI304
15	HANDLE	1	AISI304	AISI304
16	PLASTIC COVER	1	PLASTIC	PLASTIC
17	BOLT	(112"2'4pcs) (2112"3'6pcs)		AISI304
18	SPRING WASHER	(4'6'8pcs)		AISI304



ISO5211 PCD ØF	H	W	ØPdkA	ØPcdB	Kgf/mm
4-42 x M5	75	135	x	x	54
4-42 x M5	75	135	x	x	78
4-50 x M6	85	140	x	x	106
4-50 x M6	90	140	x	x	150
4-70 x M8	125	210	x	x	200
4-70 x M8	130	210	x	x	290
4-70 x M8	160	260	x	x	500
4-102 x M10	170	320	x	x	770
4-102 x M10	180	320	x	x	1130
x	200	470	F10/Ø102	F12/Ø125	1500
x	215	550	F10/Ø102	F12/Ø125	1800



## 2 delige geflensde kogelkraan FB

	Ød	ØG	ØK	ØD	L	B	I/N	P
2-delige geflensde kogelkraan F4 DN15 PN40	15	45	65	95	115	14	14/4	2
2-delige geflensde kogelkraan F4 DN20 PN40	20	58	75	105	120	16	14/4	2
2-delige geflensde kogelkraan F4 DN25 PN40	25	68	85	115	125	16	14/4	2
2-delige geflensde kogelkraan F4 DN32 PN40	32	78	100	140	130	16	18/4	2
2-delige geflensde kogelkraan F4 DN40 PN40	38	88	110	150	140	16	18/4	3
2-delige geflensde kogelkraan F4 DN50 PN16	50	102	125	165	150	18	18/4	3
2-delige geflensde kogelkraan F4 DN65 PN16	65	122	145	185	170	18	18/4	3
2-delige geflensde kogelkraan F4 DN80 PN16	80	138	160	200	180	20	18/8	3
2-delige geflensde kogelkraan F4 DN100 PN16	100	158	180	220	190	20	18/8	3
2-delige geflensde kogelkraan F5 DN125 PN16	124	188	210	250	325	22	22/8	3
2-delige geflensde kogelkraan F5 DN150 PN16	150	215	240	285	350	22	22/8	3